

# Dashboard Widgets: Query Based

Last updated by | David Mishler Gomocha | May 2, 2025 at 1:21 PM GMT+2



## Dashboard Widgets: Query Based

The screenshot shows the Gomocha FSP Portal interface. The main dashboard area contains several widgets: a bar chart titled 'All assets per type' showing counts for various asset categories; a donut chart titled 'All assets per condition' showing the distribution of assets across different condition levels (Excellent, Fair, Good, Very good, Poor); and a grid of 12 asset count tiles for categories like Bag filling mac..., Compressor, Cooking unit, Dishwasher, Electrical gene..., Elevator, Freezer storag..., Mobile device, Palletizers, Pump, Revolving doors, and Sliding doors.

The 'Add widget' sidebar on the right lists several widget options, with four highlighted by red arrows:

- Query list**: Displays a list of results using a saved search query.
- Report**: Display a report from microsoft sql server reporting services.
- Embed url**: Embed a url.
- Query grid**: Displays a list of results using a saved search query and displayed using the saved search grid.
- Chart**: Visualize data using saved search queries.
- Timesheet**: Display total hours based on start/end of shift in the selected period.
- Query tile**: Displays the total number of results using a saved search query.

- The following widgets are powered by saved **Search Queries**:
  - **Query Tile, Query Grid, Query List, and Chart**
- When creating a widget, select a query from the dropdown list.
- FMP360 includes **preconfigured standard queries**, but you can also create **custom queries** using the **Advanced Search** options.
- Examples are shown in the image provided.
- Instructions for creating a saved search query are covered in the next section.

## Query Tile

Share with entire organisation

Use translation

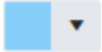
Title

Action planner required

Query

Action planner required

Color

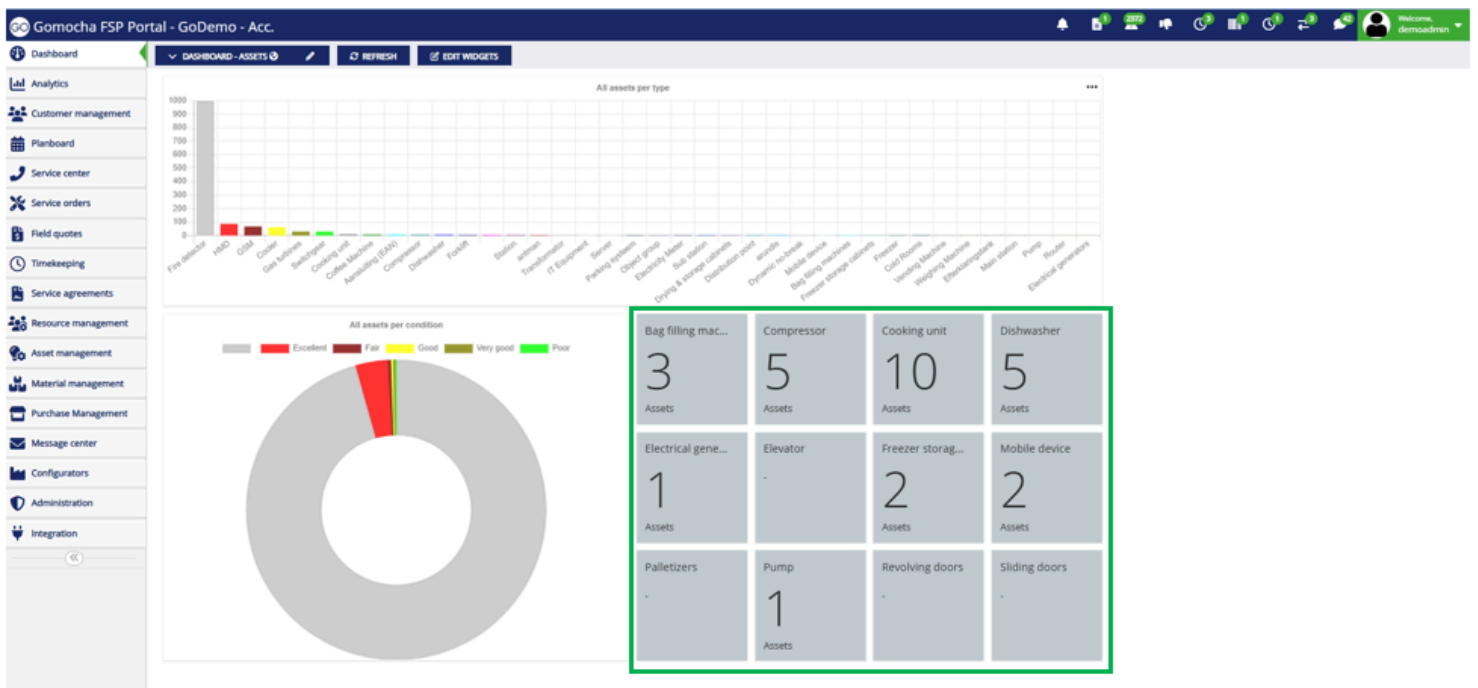


SAVE

CANCEL

- Most commonly used widget; shows the **total number of results** from a saved search query.
- Configuration options:
  - **Share with Organization:** Shares widget with entire organization with Dashboard access
  - **Title:** Display name of the widget on the dashboard.
  - **Query:** Select a saved search to determine the data shown (e.g., *All Assets* displays asset info).
  - **Color:** Choose the tile color for visual organization.
- Clicking the tile redirects the user to the **FMP360 Search** screen with the related query results.

## Visual Output



## Output After Clicking Tile

Assets SEARCH ADVANCED All assets - Bag filling machines Clear all Type In Bag filling machines

MAP Asset details

Export to excel

Drag a column header and drop it here to group by that column

Co...	Customer Outlet	Id	Serial number	Description	Type	Operational hours	Warranty date	Next inspection date	Last inspection c
<input type="checkbox"/>	Adriaanse 2	bgfm_12344	bgfm_12344_231233213	Bag filling machine A	Bag filling machines	2567		4/29/2026	4/29/2025
<input type="checkbox"/>	Anders	hottery3		hottery3	Bag filling machines				
<input type="checkbox"/>		F1		Ford mini van	Bag filling machines				

## Query Grid

Size

3x4

Share with entire organisation

Use translation

Title

Action planner required

Query

Action planner required

Grid

Work order details

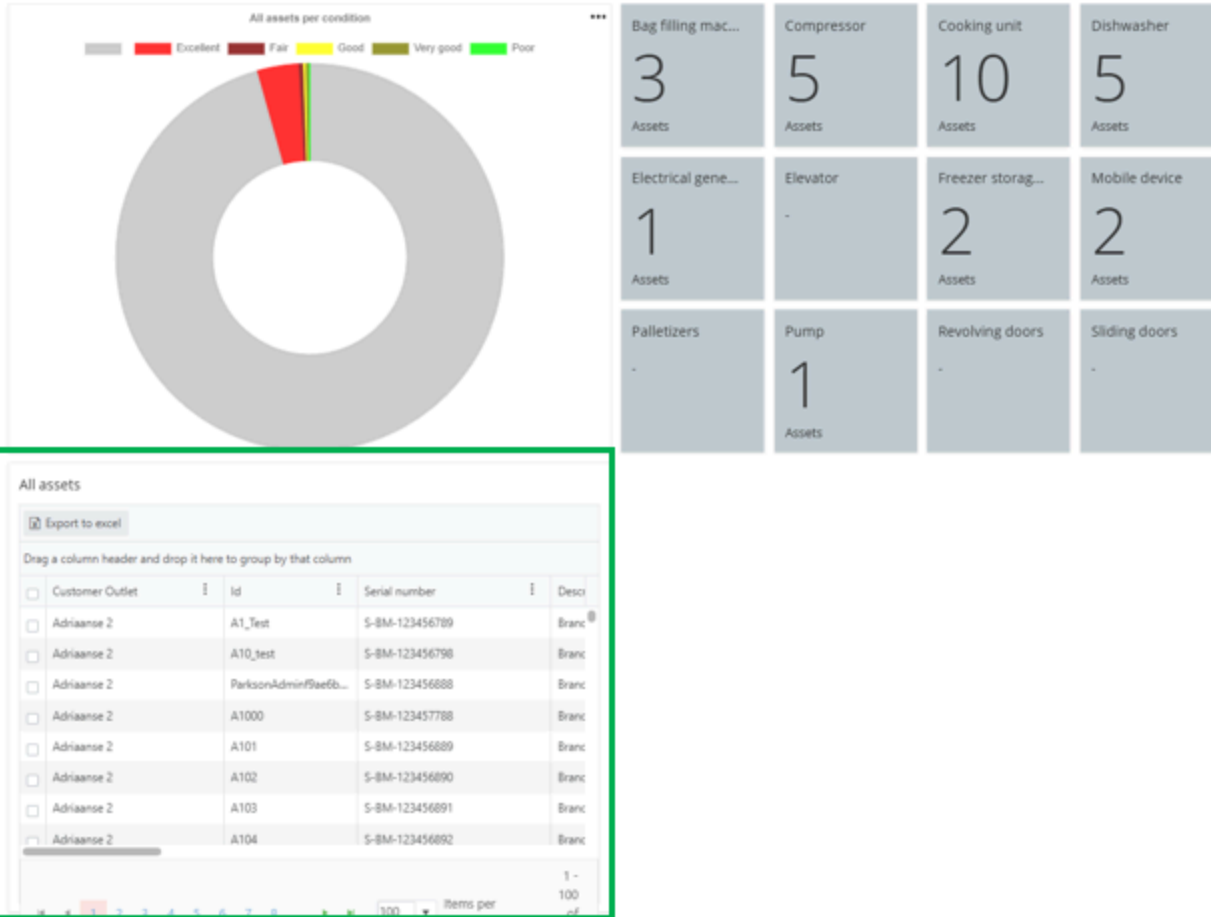
SAVE

CANCEL

- Displays a **list of results** using a saved search query, shown in a **grid format**.
- Configuration options:
  - **Size:** Set the widget size on the dashboard.
  - **Share with Organization:** Shares widget with entire organization with Dashboard access
  - **Title:** Display name of the widget.
  - **Query:** Select a saved search to define the data shown.
  - **Grid:** Automatically adapts based on the query type:
    - **Work Order queries** show work order details.
    - **Asset queries** show asset details.
- Clicking a grid entry redirects the user to the **corresponding details screen** (e.g., Work Order or Asset Details).

- Example: if information is based on work orders, then user will be redirected to work order details screen

## Visual Output



## Output Example After Clicking on Grid Item

Brandmelder 1 TEST

Asset details

CREATE NEW ▼ + ADD SUB ASSET EXPORT

Asset information		Address		Brand ID	Custom fields
Customer Name	Adriaanse	Street	Generaal Vetterstraat21		
CustomField_AssetLabelKeyCheck2	Breakdown	House Number	7312		
Parent asset	-	House number addition	-		
Asset number	A1_Test	Zip	1059 BT		
Serial number 1	Ser1	City	1059 BT		
Name	Brandmelder 1 TEST	Country	Netherlands21ok		
Is active	Yes	State	21		
Type	Cooler	Additional Address info	21		
Serial number	S-BM-123456789	Region	NC		
Project number	-	Latitude	52.34370803833008		
Customer reference	ref1	Longitude	4.846975326538086		
Maintenance Code	-				
Skills	-				
Project name	ProjectNameTest				
Preferred engineer	-				

Attachments

Server attachments

Client attachments

Features

## Query List

Size

2x2

Share with entire organisation

Use translation

Title

Action planner required

Query

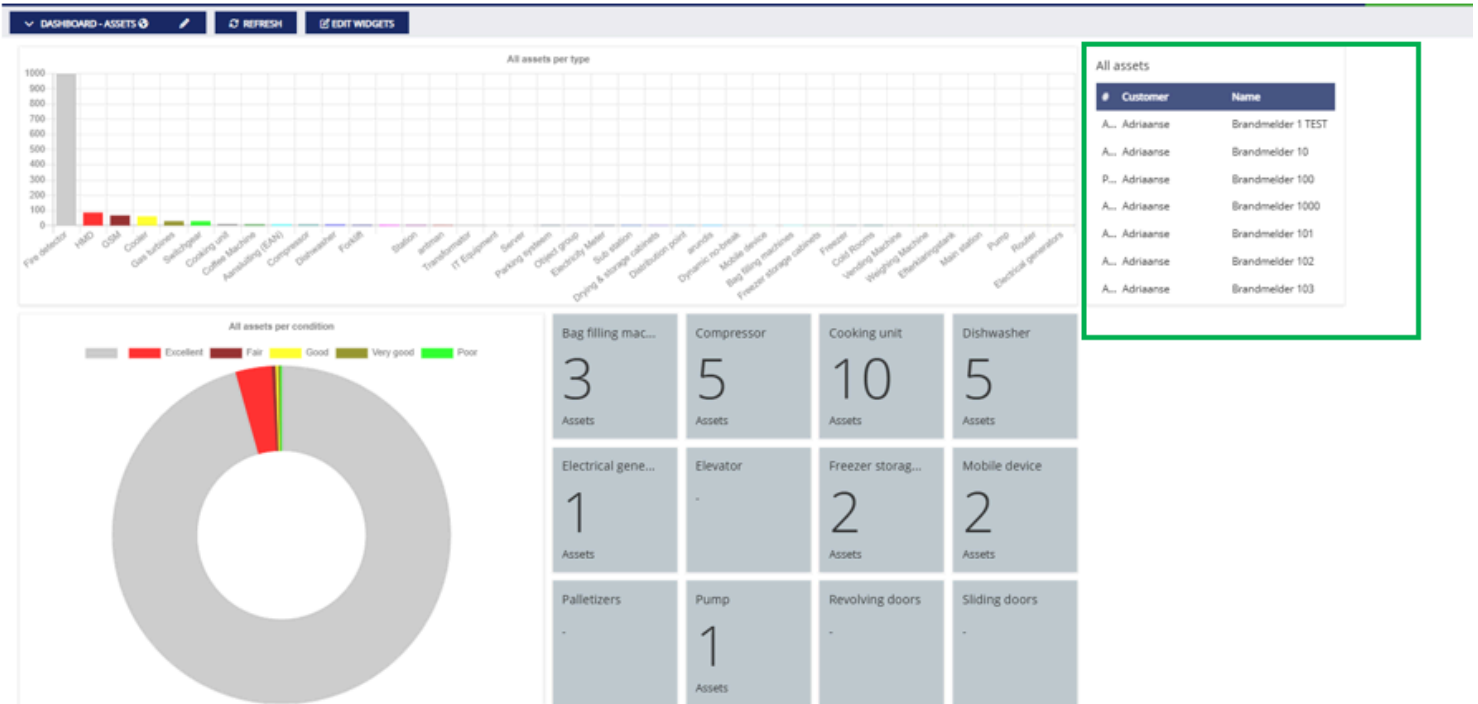
Action planner required

SAVE CANCEL

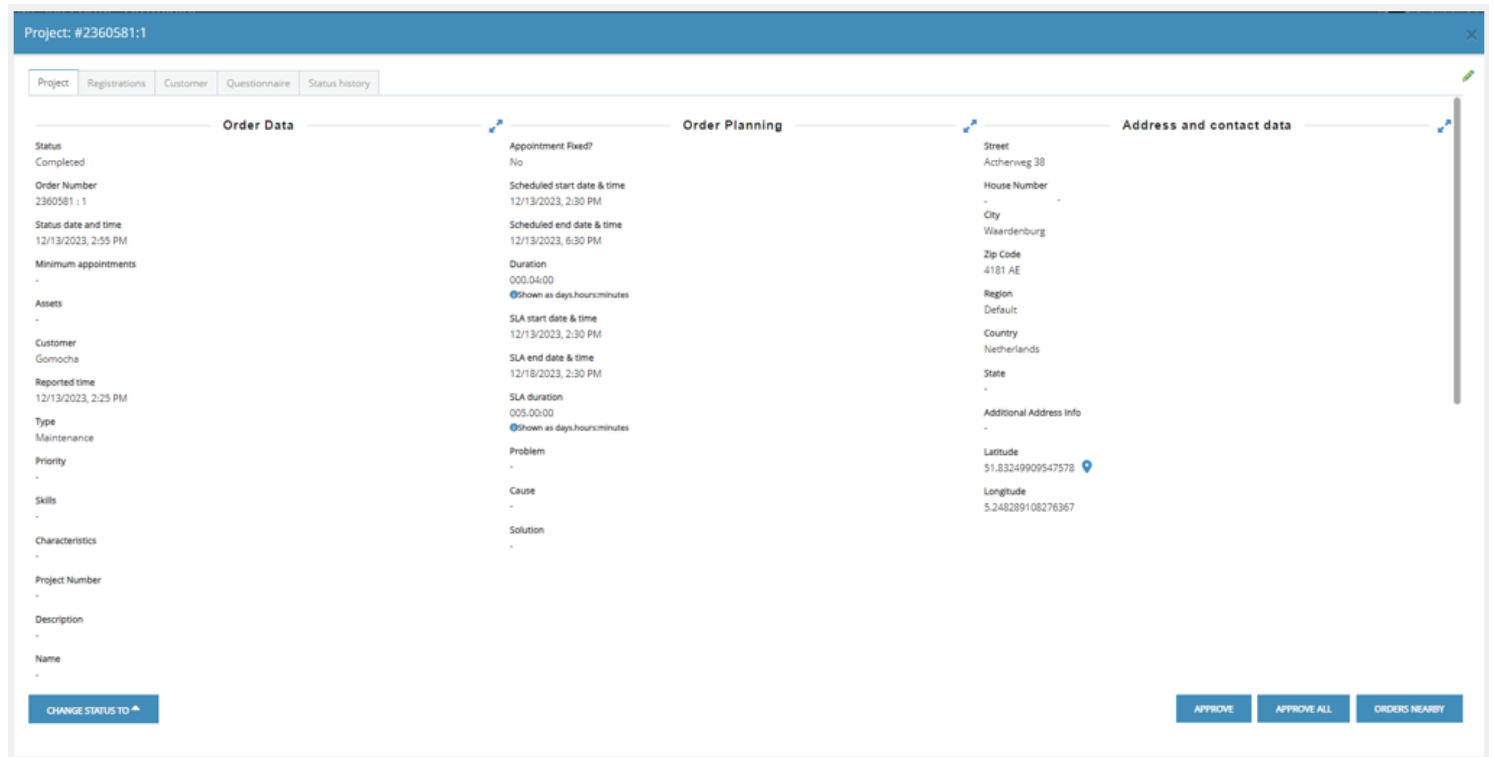
- Displays a **list of results** from a saved search query.
- Configuration options:
  - **Size:** Set the widget's display size on the dashboard.
  - **Share with Organization:** Shares widget with entire organization with Dashboard access
  - **Title:** Use the same title as the query or customize it.
  - **Query:** Select a saved search to define the data shown.

- Clicking a list item redirects the user to the **FMP360 Search** screen with the relevant details (e.g., Work Order or Asset Details).

## Visual Output



## Output Example After Clicking List Item



## Chart

Size

Share with entire organisation

Use translation

Title

Query

Chart type

Group by

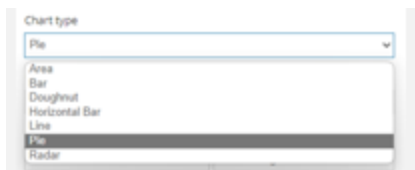
Sort

Order

SAVE

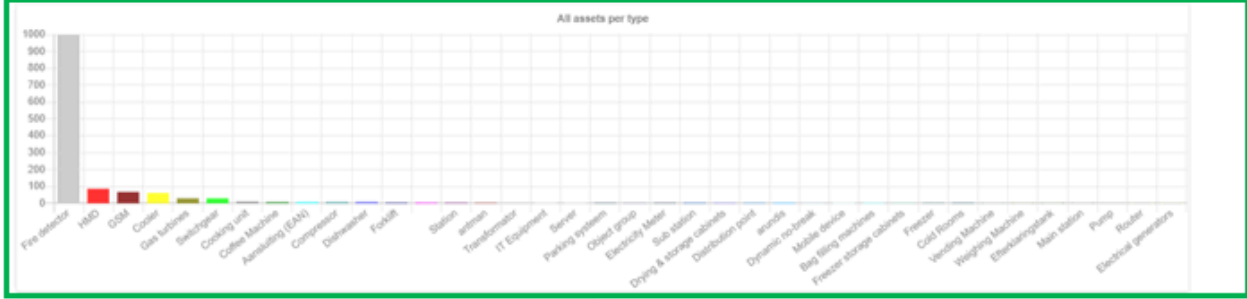
CANCEL

- Visualizes data from a saved search query in **chart format**.
- Configuration options:
  - **Size**: Define the widget's size on the dashboard.
  - **Title**: Use the query title or customize it.
  - **Query**: Select a saved search to determine the data shown.
  - **Chart Type**: Choose from **7 available chart types**.



- **Group By**: Defines how data is grouped in the chart (multiple options available).
- **Sort**: Choose to sort by **Value** or **Label**.
- **Order**: Set the display order as **Ascending** or **Descending**.

Visual Output



Bag filling mac... 3 Assets	Compressor 5 Assets	Cooking unit 10 Assets	Dishwasher 5 Assets
Electrical gene... 1 Assets	Elevator -	Freezer storag... 2 Assets	Mobile device 2 Assets
Palletizers -	Pump 1 Assets	Revolving doors -	Sliding doors -