

# Dashboard Widgets: Non-query based

Last updated by | David Mishler Gomocha | May 2, 2025 at 1:34 PM GMT+2



## Dashboard Widgets: Non-query based

The screenshot shows the Gomocha PSP Portal dashboard. The main area contains several widgets: a bar chart titled 'All assets per type' showing counts for various asset types; a donut chart titled 'All assets per condition' showing the distribution of assets across condition levels (Excellent, Fair, Good, Very good, Poor); and a grid of asset counts for specific categories like Bag filling mac..., Compressor, Cooking unit, Dishwasher, etc. On the right side, there is an 'Add widget' panel with a green border. This panel lists several widget types: Query list, Report, Embed url, Query grid, Chart, Timesheet, and Query tile. Red arrows point to the 'Report' and 'Embed url' options in the list.

## Report

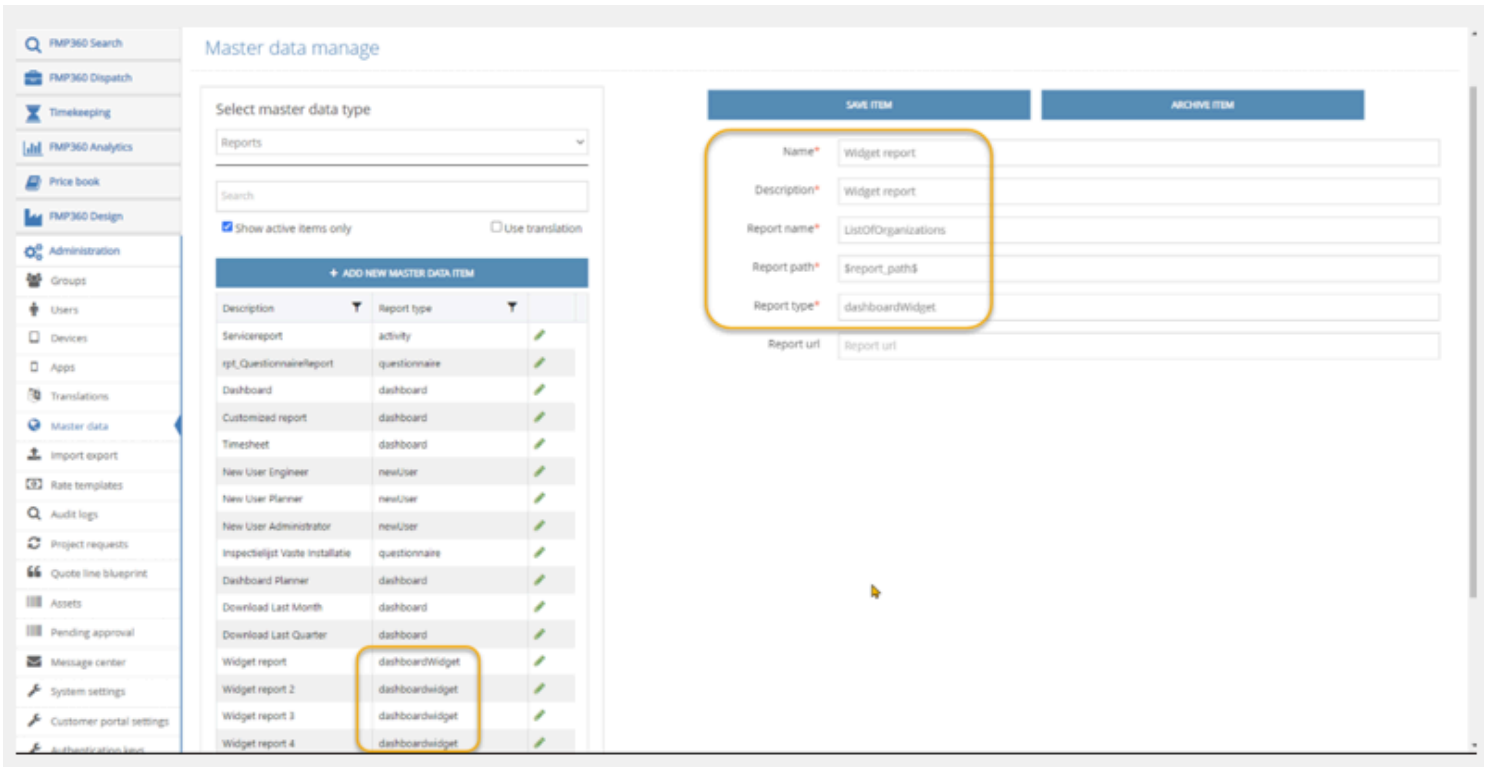
Size  
2x2

Share with entire organisation

Report  
Stock Item Report

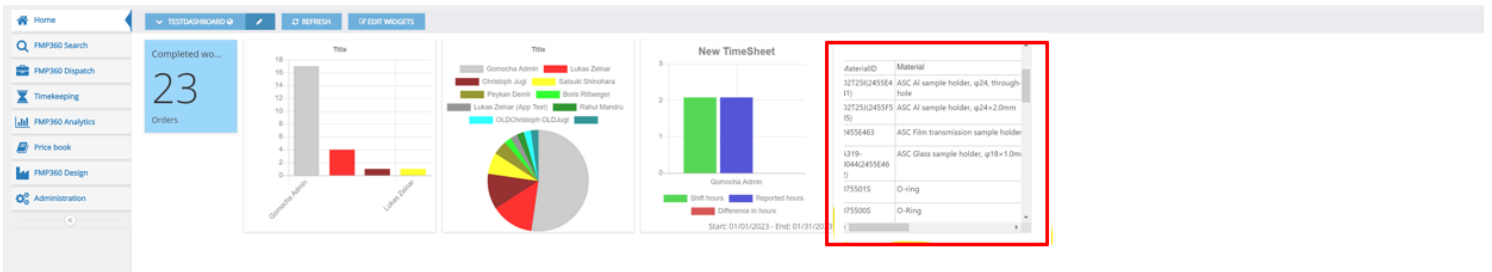
SAVE CANCEL

- **Size:** Defines the widget's display size on the dashboard.
- **Share with Organization:** Indicates whether the widget is shared with the entire organization.
- **Report:** Select a report from the list of configured reports.



- Displays a **customer-specific report** created using **Microsoft SQL Reporting Services**.
- Reports are **configured by Gomocho consultants**.
- The user must **configure the report** before the widget can display data.

## Visual Output



## Embedded URL

Size

2x2

Share with entire organisation

Use translation

Title

GOMOCHA

Url

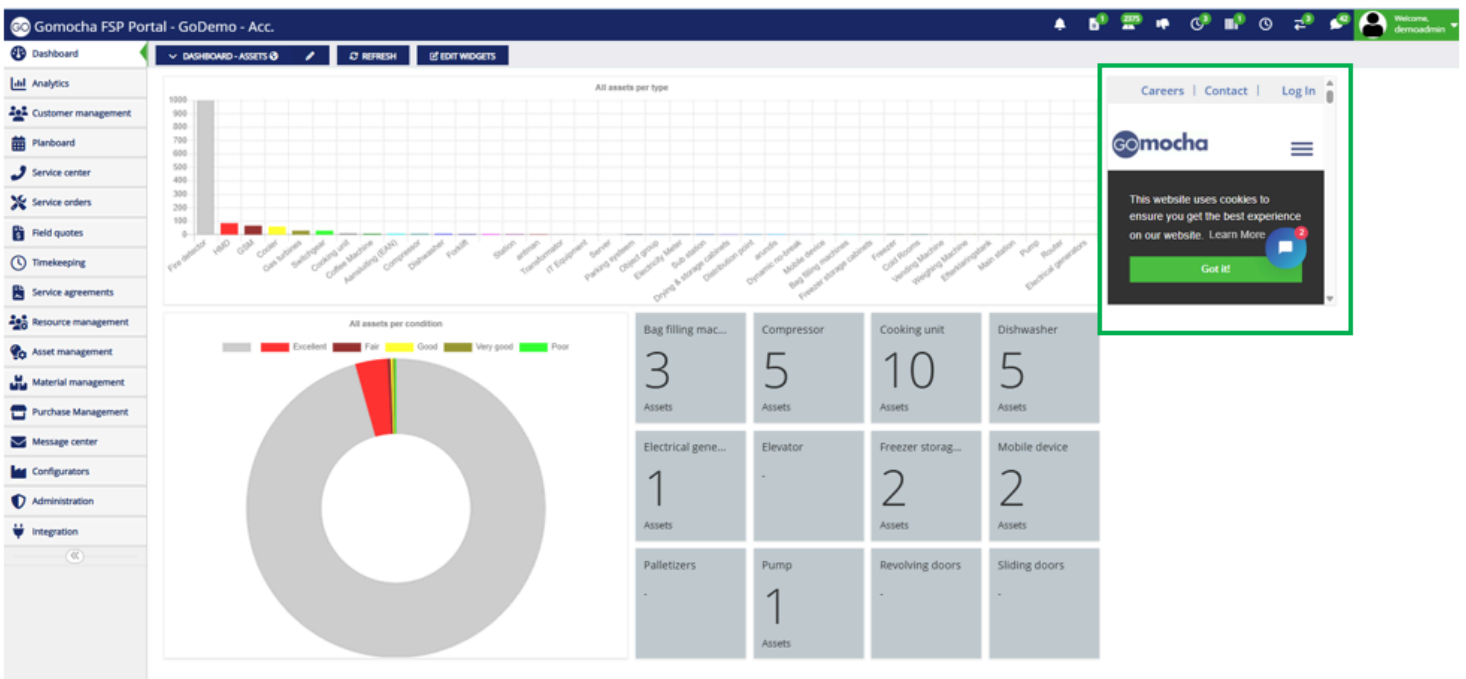
https://www.gomocha.com/

SAVE

CANCEL

- Allows users to **embed a URL** directly into the dashboard.
- Configuration options:
  - **Share with Organization:** Indicates whether the widget is shared with the entire organization.
  - **Size:** Set the widget's display size.
  - **Title:** Define the widget title shown on the dashboard.
  - **URL:** Enter the website address to embed.

## Visual Output



- Example uses Gomocha website
- Embedded website is interactive

## Timesheet

Size

2x2

Use translation

Title

Test Time Sheet

Chart type

Bar

Sort

None

Region

Select Some Options

Engineer group

Select Some Options

Engineer

Amanda Rok x Anders Groeschel x Anders-App Groeschel-App x  
Arjan van der Linden x Bastiaan Pierhagen x  
Bopanna Muddiyada x Chris Dashiell x David Mishler x  
DemoAdmin DemoAdmin x Jason Price x Jayhan Talines x

Date range

11/08/2024 - 05/01/2025

SAVE

CANCEL

- Displays **total hours worked** based on shift start/end times within a selected date range.
- Configuration options:
  - **Size:** Set the widget's display size.
  - **Title:** Define the widget title shown on the dashboard.
  - **Chart Type:** Choose from **Bar**, **Horizontal Bar**, or **Table**.

- **Sort:** Specify the display order of the data.
- **Region:** Select user region(s) to include.
- **Engineer Group:** Choose engineer group(s) to display.
- **Engineer:** Select individual engineer(s) to display.
- **Date Range:** Define the time period for which hours are shown.

## Visual Output

